



FM 2818 Update

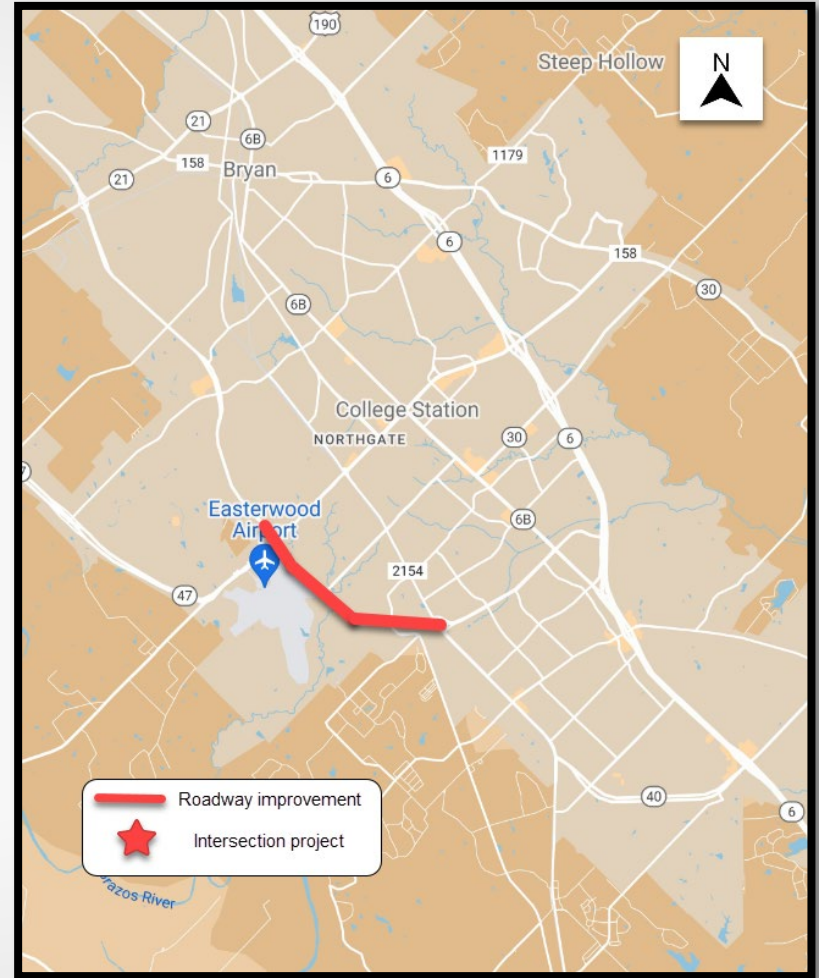
Transportation Services Advisory Committee

September 4, 2024

Debbie Albert: d-albert@tti.tamu.edu

FM 2818 (aka 20-hate-18)

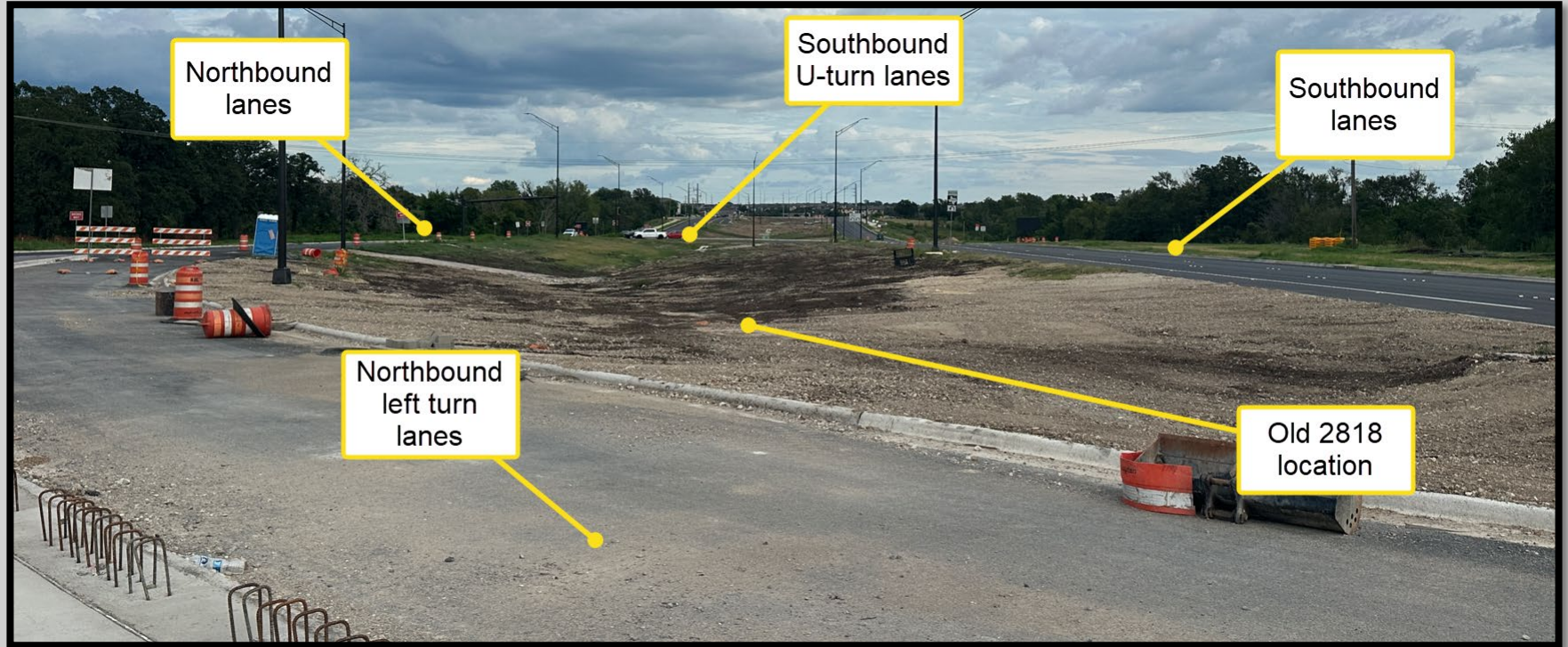
- \$45 M Construction
- Began Feb 2021
- In Phase 4 of 4 (median work)
Dec 2023
- Phase 4, Stage 2 began May
 - Intersections closed
- Expected completion:
End of 2024



FM 2818 – Wellborn Rd to Stotzer Pkwy (2021 to 2024)

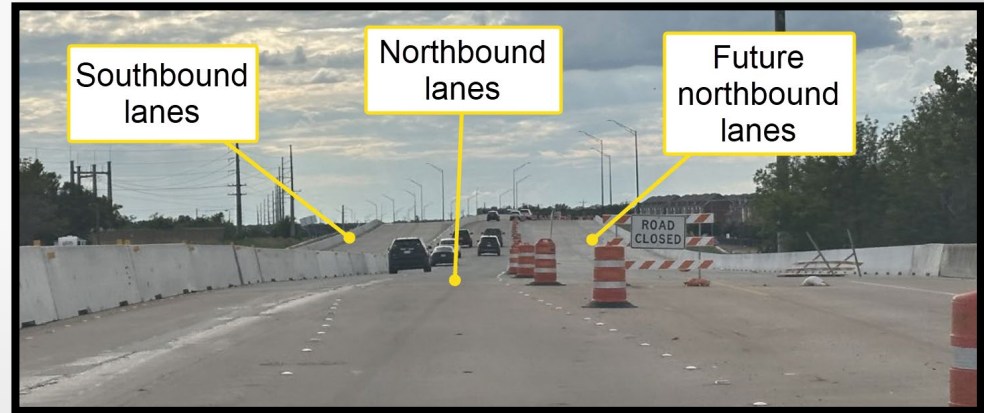


FM 2818 Existing Conditions

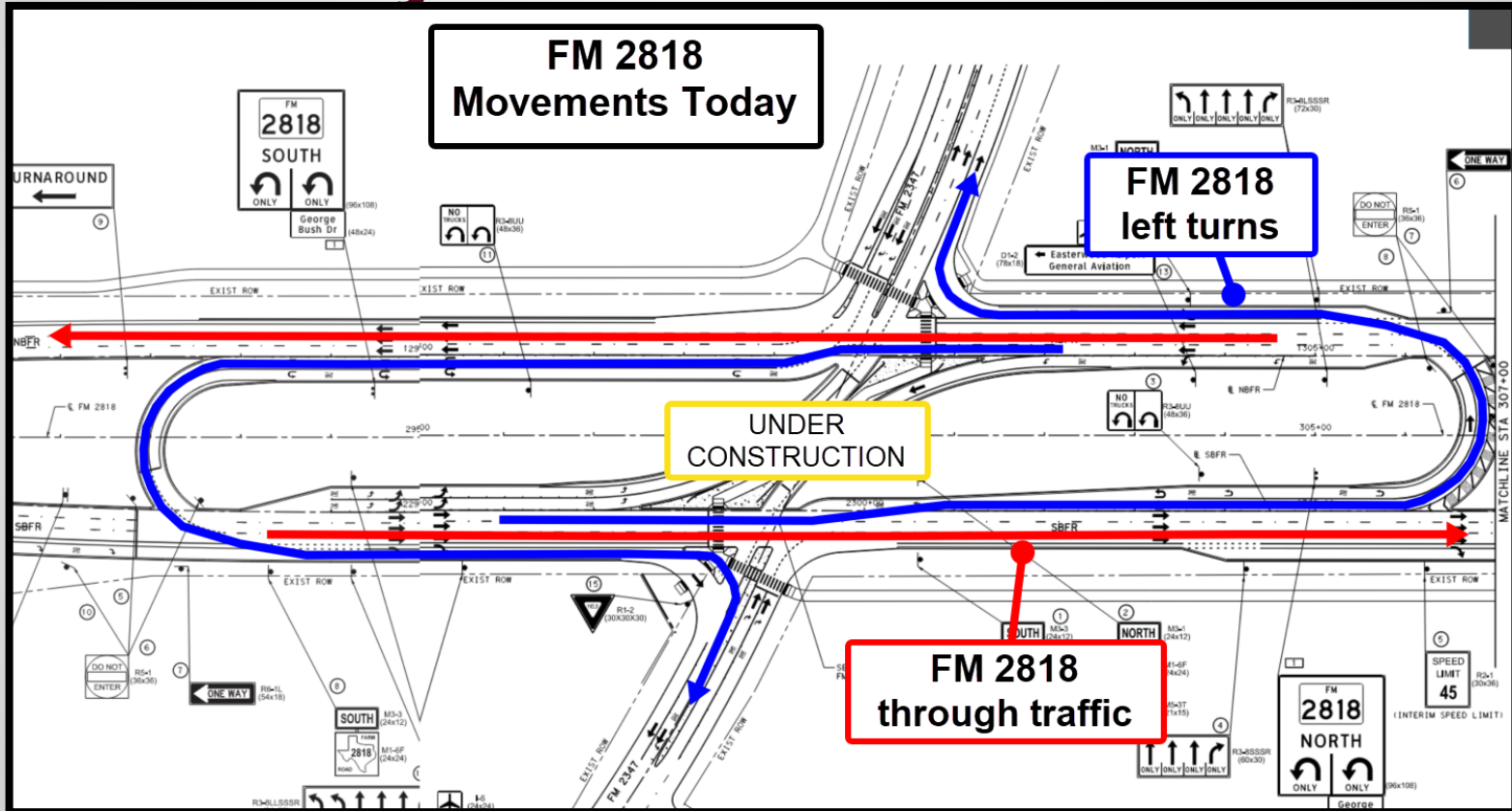


Remaining Work

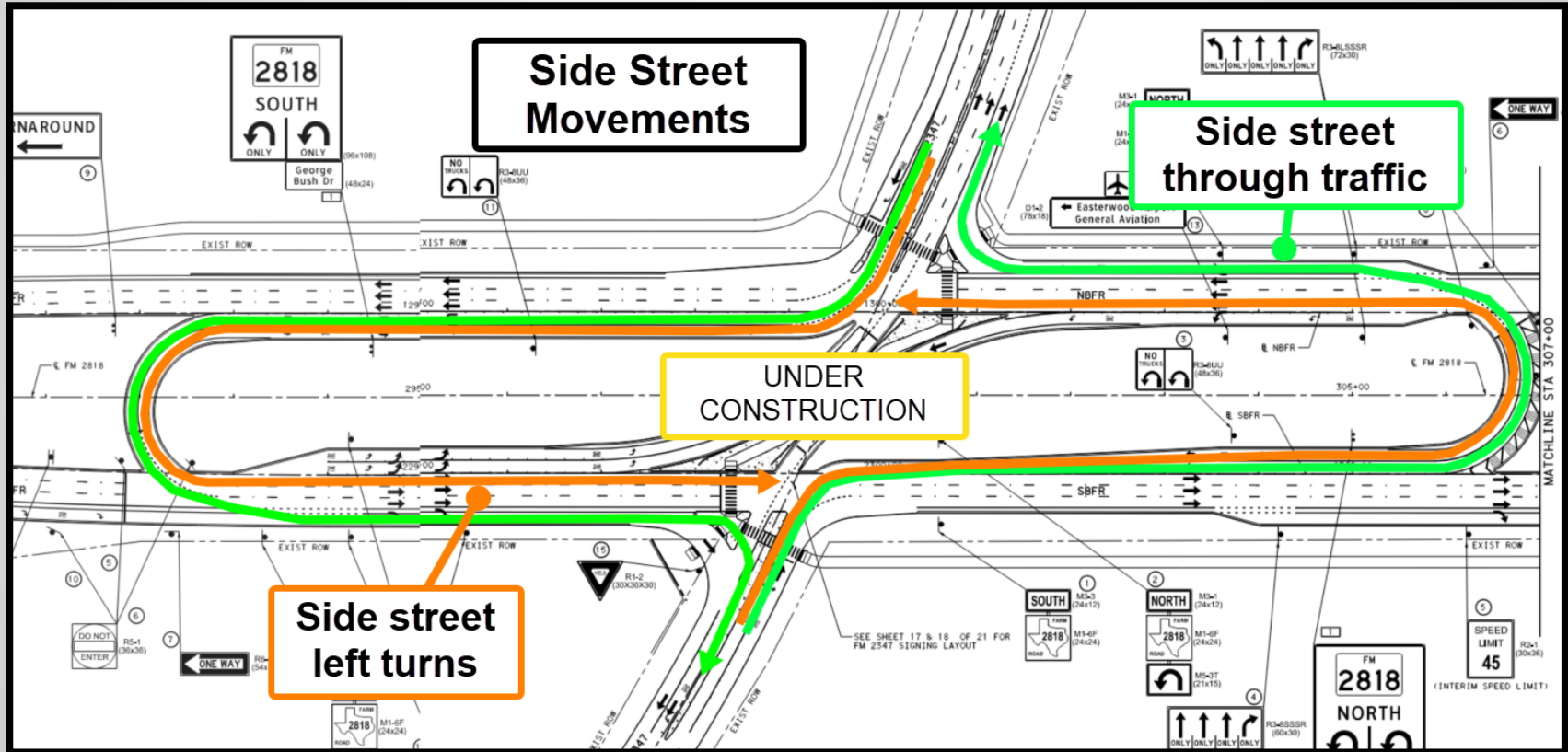
- Drainage & landscaping
- West leg of Bush
- Pedestrian crossings and open the median crossovers
- Permanent signals & striping
- Jones Butler bridge area



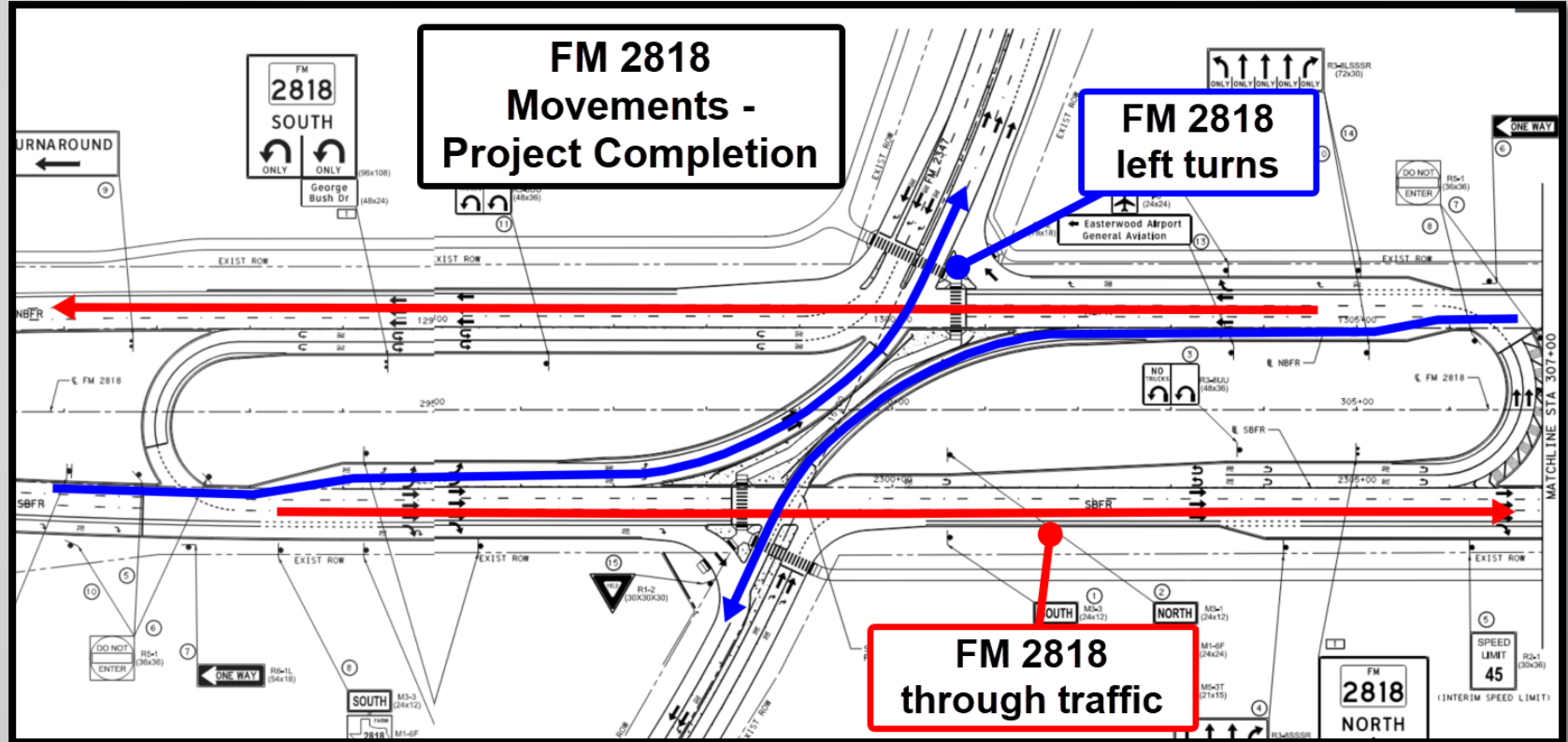
Super Street Traffic Movements – 2818 Today



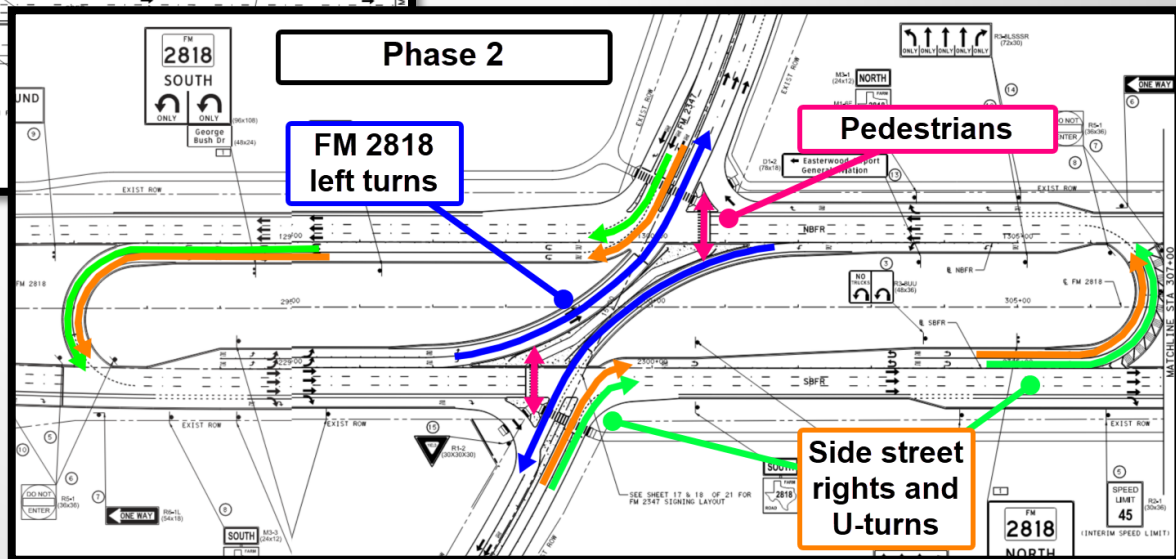
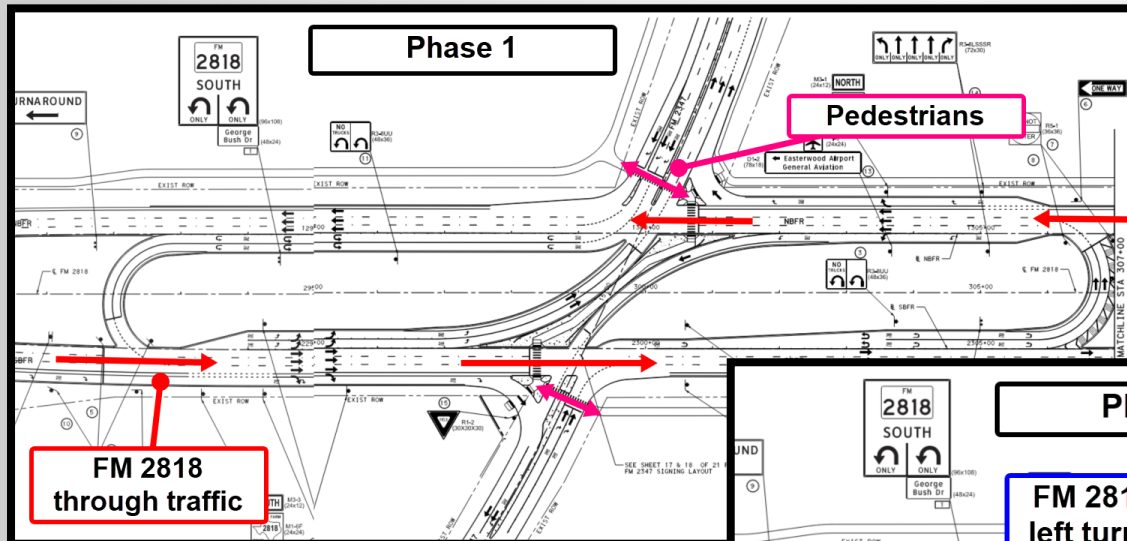
Super Street Traffic Movements – Side Streets



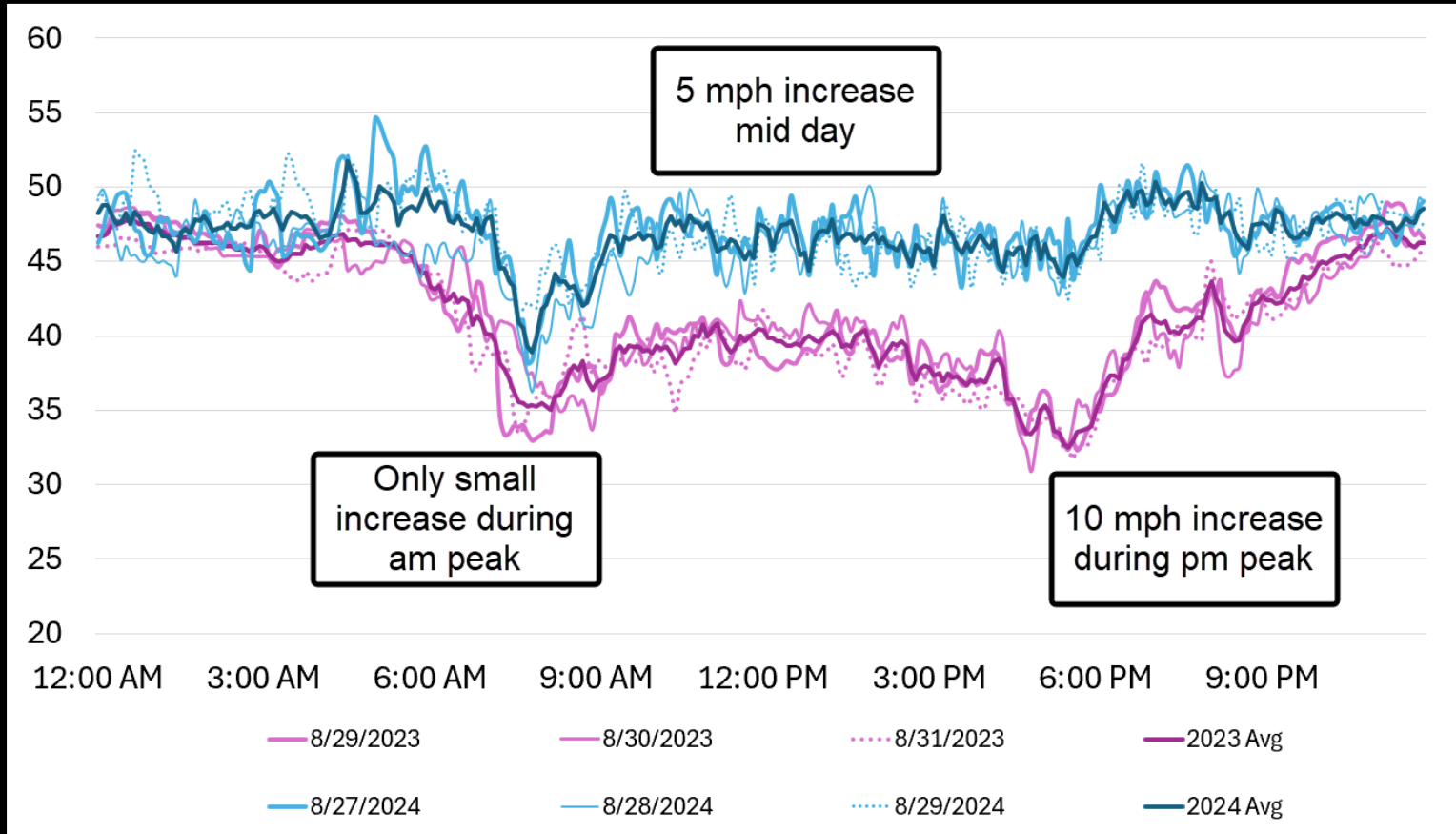
Super Street Traffic Movements – 2818 Project Completion



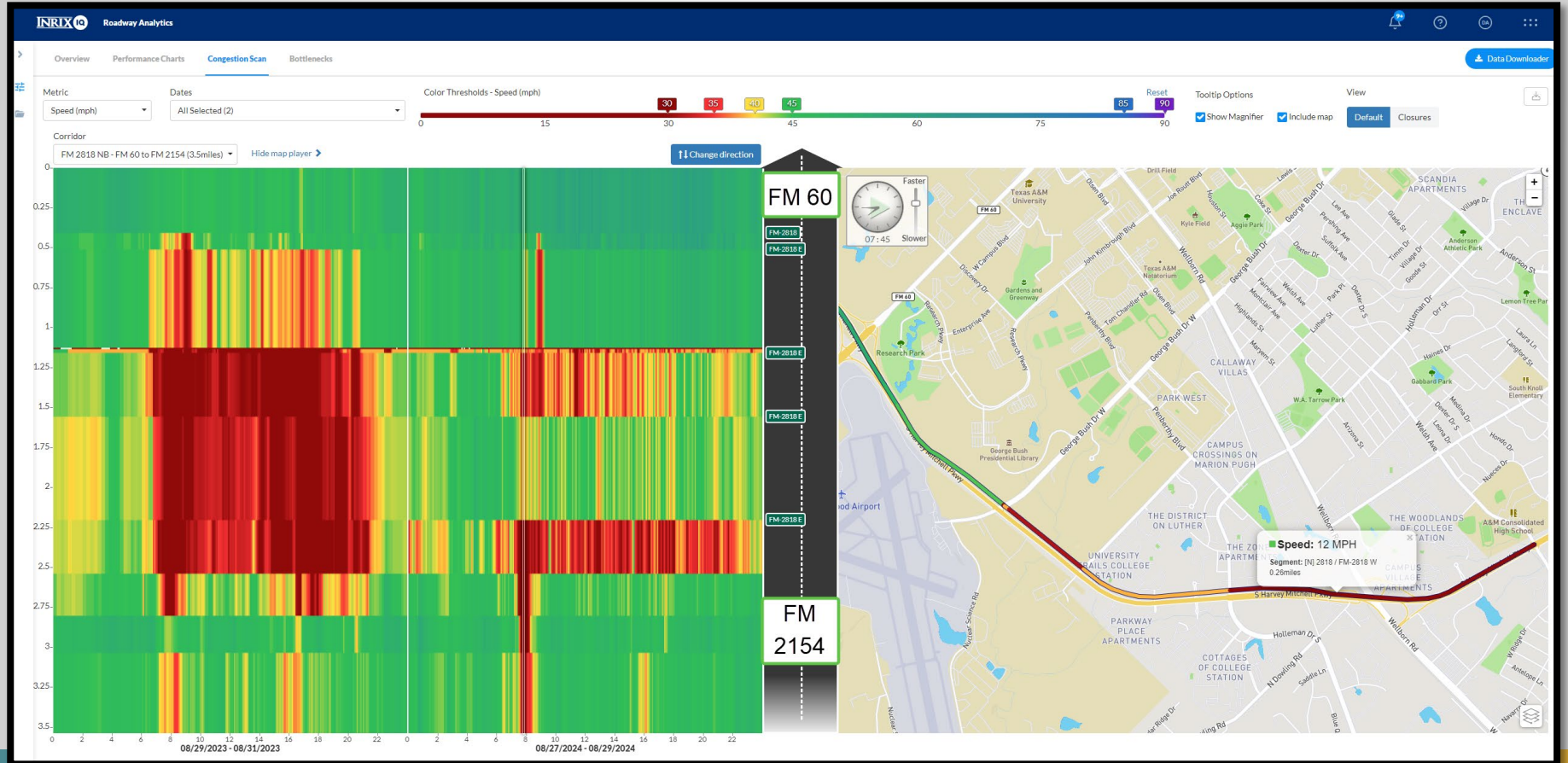
Traffic Signal Operations



2023 vs 2024 FM 2818 Average Speeds



Why the slower speeds in the morning?





We're Building BWX!

Tell us about your Bush-Wellborn travel and construction information needs.



FILL OUT THE SURVEY